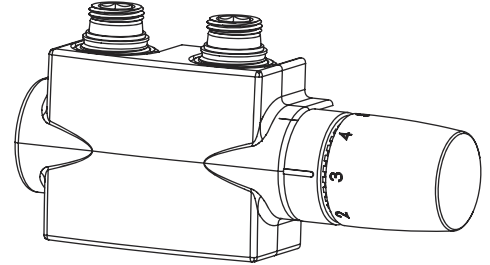


# Quadro Ventilhahnblock

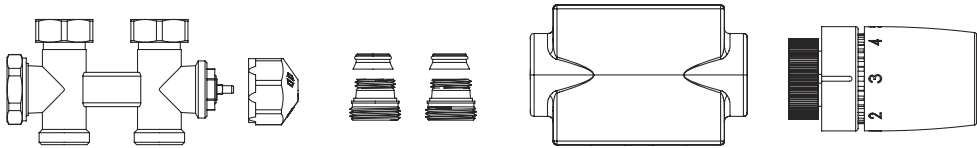
MA-000099

## Montageanleitung / Assembly Instruction

Arbeiten an der Heizungsanlage müssen von qualifiziertem Fachpersonal und in Übereinstimmung mit den jeweils gültigen Vorschriften, Richtlinien und Regeln der Technik ausgeführt werden.  
 Work on the heating system must be carried out by qualified personnel and in accordance with the applicable regulations, directives and technical rules.



**Packungsinhalt / Package contents:**



**Werkzeug / Tools:**



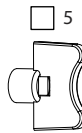
Max 110°C (230°F)  
 Max 10 bar  
 H<sub>2</sub>O VDI 2035



SW 5  
 SW 17  
 SW 19  
 SW 30  
 SW 34



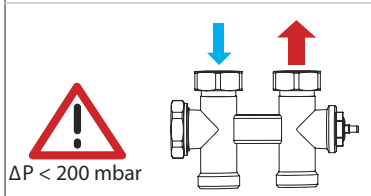
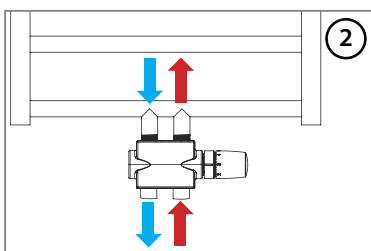
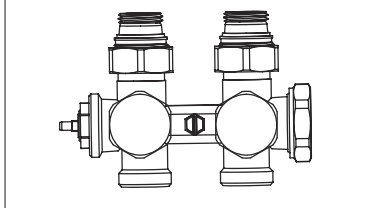
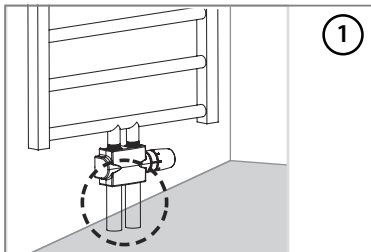
SW 4  
 SW 12



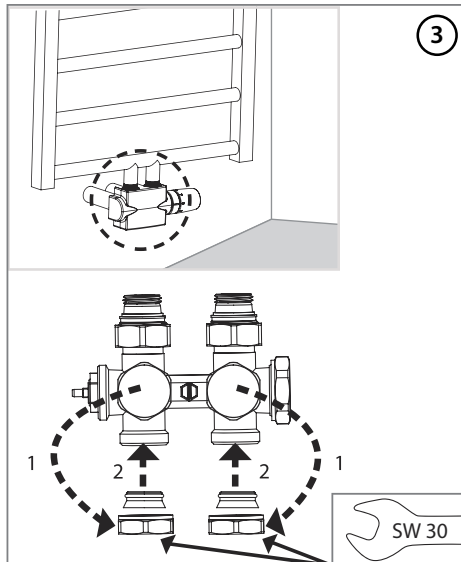
5



**Auslieferungszustand / Delivery status:**



**Umbau Durchgang -> Eck / Conversion straight -> angle**  
 T Max. : 120°C  
 T Max. : 90°C mit Abdeckung / with cover  
 T Min. : -10°C



**Umbau Rechts -> Links / Conversion right -> left**

