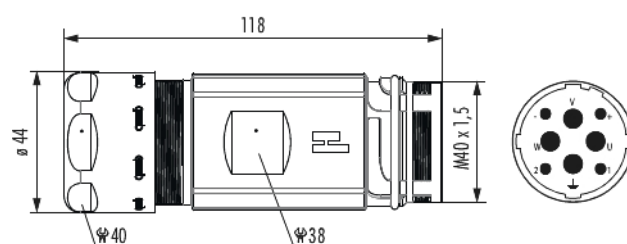
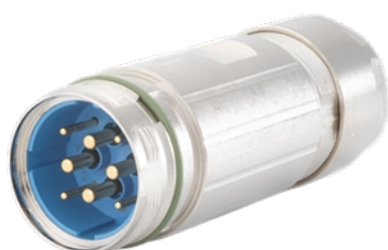


Housing incl. Insert TWILOCK-S coupler connector M40 Power - 4+3+PE

Item number 772074300S



Technical data

Housing type	Coupler
Material housing	Zinc Die Cast
Material housing surface	Nickel
Insert	Pin
Version	TWILOCK-S
External thread plug-in side	M40 x 1,5
TWILOCK thread	M40 x 1,5
Shield	shielded
Seal type	O-Ring
Material seals/o-rings	FKM (FPM) , NBR
Cable diameter	17 - 24 mm
Length (L)	118 mm
Wrench size (SW1/SW2)	40/38 mm
Temperature range	-40°C to +125°C
Degree of Protection	3
Protection class	IP 67 , IP 69 K



Housing incl. Insert TWILOCK-S coupler connector M40 Power - 4+3+PE

Item number 772074300S

Characteristic of connection	Crimp
Number of poles	8
Pole picture	4 + 3 + PE
Color contact insert	blue
Material insulating body	PBT
Number of contacts signal	4
Number of contacts power	3
Number of contacts PE	1
Contact-Ø signal	2 mm
Contact-Ø power	3.6 mm
Terminal cross section signal	0,14 - 1,5 mm ²
Terminal cross section power	2,5 - 16 mm ²
Crimp range	- mm ²
Nominal current signal	28 A
Nominal current power	55 A
Nominal voltage at degree of pollution 3 signal	300 V [~]
Nominal voltage at degree of pollution 3 power	600 V [~]
Test voltage signal	2500 V [~]
Test voltage power	4000 V [~]
Insulation resistance signal	> 10 ¹³
Insulation resistance power	> 10 ¹³
max. contact resistance data	3 mOhm
max. contact resistance power	1 mOhm



Housing incl. Insert TWILOCK-S coupler connector M40 Power - 4+3+PE

Item number 772074300S

Minimum mating cycles > 500



Housing incl. Insert TWILOCK-S coupler connector M40 Power - 4+3+PE

Item number 772074300S

Commercial data

Packaging Unit	5
EAN code	4033878011027
Weight	0.34374 kg
ETIM 7	EC002635
ETIM 8	EC002635
ETIM 9	EC002635
Customs tariff number	85366990

Note:

