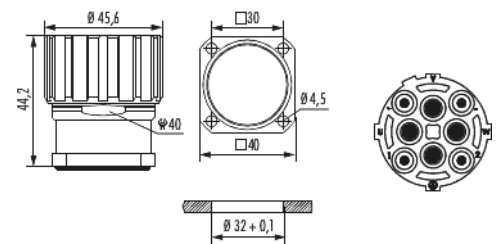


# Housing incl. insert panel connector M40

## Power - 8-pole

Item number 7744043000



### Technical data

Material housing	Copper-Zinc alloy
Material housing surface	Nickel
Insert	Socket
Installation type	Front wall
Version	for socket inserts
Internal thread plug-in side	M40 x 1,5
Knurled nut-Ø plug-in side	45.6 mm
Locking type	Screw
Shield	unshielded
Seal type	O-Ring
Material seals/o-rings	FKM (FPM) , NBR
Panel hole	Ø 32 + 0,1 mm
Length (L)	44.2 mm
Wrench size (SW)	40 mm
Temperature range	-40 °C to +125 °C
Degree of Protection	3



# Housing incl. insert panel connector M40

## Power - 8-pole

Item number 7744043000

Protection class	IP 67 , IP 69 K
Characteristic of connection	Crimp
Number of poles	8
Pole picture	4 + 3 + PE
Color contact insert	blue
Material insulating body	PBT
Number of contacts signal	4
Number of contacts power	3
Number of contacts PE	1
Contact-Ø signal	2 mm
Contact-Ø power	3.6 mm
Terminal cross section signal	0,14 - 1,5 mm <sup>2</sup>
Terminal cross section power	2,5 - 16 mm <sup>2</sup>
Crimp range	0.14 - 16 mm <sup>2</sup>
Nominal current signal	28 A
Nominal current power	55 A
Nominal voltage at degree of pollution 3 signal	300 V <sup>~</sup>
Nominal voltage at degree of pollution 3 power	600 V <sup>~</sup>
Test voltage signal	2500 V <sup>~</sup>
Test voltage power	4000 V <sup>~</sup>
Insulation resistance signal	> 10 <sup>13</sup>
Insulation resistance power	> 10 <sup>13</sup>
max. contact resistance signal	3 mOhm



# Housing incl. insert panel connector M40

## Power - 8-pole

Item number 7744043000

max. contact resistance power	1 mOhm
Minimum mating cycles	> 500
Suitable Signal contacts	7015952002
Suitable power contacts	7015953602 , 7015953612 , 7015953622 , 7015953624 , 7015953632
Suitable PE-/FE-contacts	7015953602 , 7015953612 , 7015953622 , 7015953624 , 7015953632



# Housing incl. insert panel connector M40

## Power - 8-pole

Item number 7744043000

### Commercial data

Packaging Unit	5
EAN code	4033878504604
Weight	0.0022 kg
ETIM 7	EC002635
ETIM 8	EC002635
ETIM 9	EC002635
eCl@ss 10.1	27440102
Customs tariff number	85366990

Note:

