

FLEXIBLE CONNECTIONS



THE POPULAR PROBLEM SOLVERS

Heating renovation made easy

Flexible radiator connections are one of the most popular problem solvers for installers. With their help, radiators can be connected quickly, cleanly and flexibly, even in confined spaces. The HUMMEL problem solvers bridge both horizontal centre distances and height differences. Installers will find the right solution for every challenge on site.

- // Quick and easy installation
- // Ideal for renovations and refurbishments of heating systems
- // Safe installation even in difficult working environments
- // High-quality materials
- // A clean affair: no welding, no thread cutting



These flexible connections cover an installation range from 65 to 410 mm



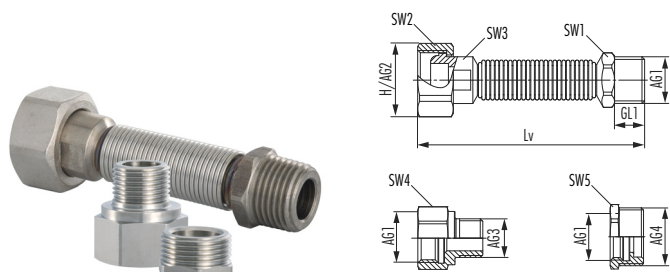
Height compensators with telescopic extensions and conical adapters



Excentres for connection fittings bridge axial distances from 35 to 65 mm

HUMMEL FLEXIBLE CONNECTIONS

Flexible radiator connections with reduction



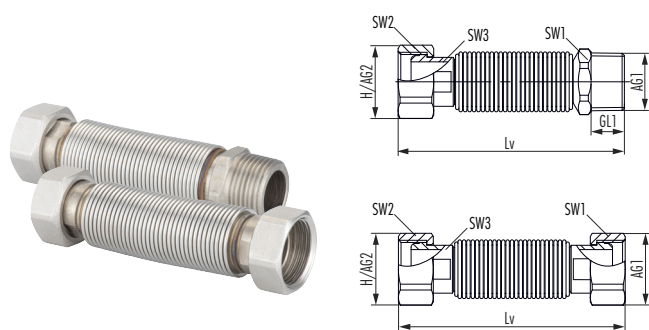
TECHNICAL DATA

Material	Stainless steel
Material moulded seal	EPDM
Material reduction	Nickel-plated brass
Max. operating pressure	10 bar
Max. operating temperature	120 °C

- // Stainless steel corrugated tube extensible
- // incl. reduction G 1/2 x G 3/8 und G 3/4 x G 1/2
- // Eurocone compatible

AG1	AG2	AG3	AG4	Lv mm	H mm	SW1 mm	SW2 mm	SW3 mm	Item-No.
G 1/2	G 3/4	G 3/8	G 3/4	65 – 95	33,5	22	30	19	28261238341
G 1/2	G 3/4	G 3/8	G 3/4	93 – 143	33,5	22	30	19	28271238341
G 1/2	G 3/4	G 3/8	G 3/4	115 – 210	33,5	22	30	19	28281238341
G 1/2	G 3/4	G 3/8	G 3/4	190 – 410	33,5	22	30	19	28291238341

Flexible connections



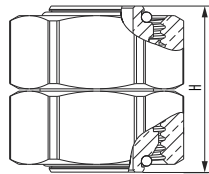
TECHNICAL DATA

Material	Stainless steel
Material moulded seal	AFM
Material union nut	Nickel-plated brass
Max. operating pressure	6 bar
Max. operating temperature	95 °C

- // Union nut G 3/4
- // Stainless steel corrugated tube extensible
- // Flat sealing version
- // For the replacement of boilers, instantaneous water heaters, storage tanks and wall-mounted appliances

AG1	AG2	Lv mm	H mm	SW1 mm	SW2 mm	SW3 mm	Flow rate l/h	Item-No.
R 3/4	G 3/4	95 – 200	33,5	27	30	21	2200	2823343401
G 3/4	G 3/4	95 – 200	33,5	30	30	21	2200	2830343401

Cone adapter



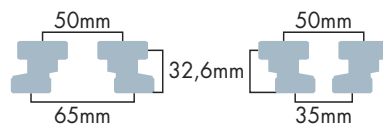
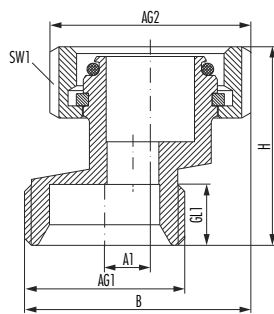
TECHNICAL DATA

Material	Nickel-plated brass
Material moulded seal	EPDM
Max. operating pressure	10 bar
Max. operating temperature	120 °C

- // Connection between return screw fitting and valve radiator
- // Conical sealing
- // Eurocone compatible

AG1	AG2	L mm	B mm	H mm	SW1 mm	SW2 mm	Item-No.
G 3/4	G 3/4	33,5	33,5	32	30	30	2155343401

Excetres for connection fittings



TECHNICAL DATA

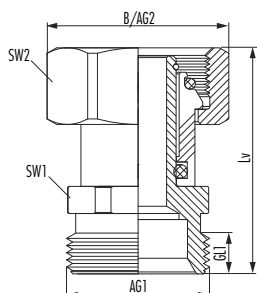
Material	Nickel-plated brass
Material moulded seal	EPDM
Max. operating pressure	10 bar
Max. operating temperature	120 °C

- // For the adjustment of axial pipe distances
- // Conical sealing
- // Eurocone compatible

AG1	AG2	A1 mm	B mm	H mm	GL1 mm	SW1 mm	Item-No.
M22 x 1,5	G 3/4	7,5	33,5	32,6	10	30	2556342201
G 1/2	G 3/4	7,5	33,5	32,6	12	30	2556341201
G 3/4	G 3/4	7,5	34	32,6	10	30	2556343401

HUMMEL FLEXIBLE CONNECTIONS

Telescopic adapter



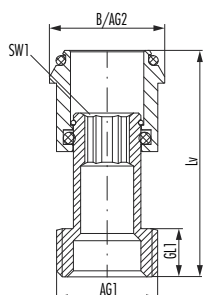
TECHNICAL DATA

Material	Nickel-plated brass
Material moulded seal	EPDM
Max. operating pressure	10 bar
Max. operating temperature	120 °C

- // Version cone & nipple: 1 cone insert & 1 x G 1/2 x G 3/4
- // Version cone: 1 cone insert
- // Version nipple: 1 x G 1/2 x G 3/4
- // For length compensation of valves and fittings
- // Eurocone compatible

AG1	AG2	Lv mm	B mm	H mm	GL1 mm	SW1 mm	SW2 mm	Version	Item-No.
G 3/4	G 3/4	37,1 – 53	33,5	53	10	24	30	-	2559343401
G 3/4	G 3/4	37,1 – 53	33,5	53	10	24	30	Nipple	2559343501
G 3/4	G 3/4	37,1 – 53	33,5	53	10	24	30	Cone	2559343601
G 3/4	G 3/4	37,1 – 53	33,5	53	10	24	30	Cone & nipple	2859343501

Telescopic connections



TECHNICAL DATA

Material	Nickel-plated brass
Material moulded seal	EPDM
Max. operating pressure	10 bar
Max. operating temperature	120 °C

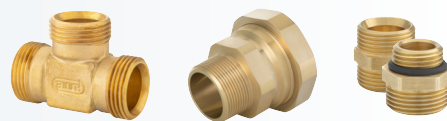
- // To compensate for distances between valve and radiator
- // O-ring sealing

AG1	AG2	Lv	B	H	GL1	SW1	Item-No.
mm	mm	mm	mm	mm			
G 3/8	1/2	31 – 47	19,8	47	10	5	2559380001
G 1/2	3/4	31 – 47	23,9	47	10	8	2559120001
G 3/4	1	31 – 47	29	47	10	10	2559340001

SOLUTIONS FOR HEATING AND DRINKING WATER SYSTEMS

Solutions for drinking water systems

Steel pipe adapters, compression fittings, connection fittings, nipples



Connection fittings

Reductions, coupling angle, steel pipe adapters, compression fittings



Radiator connections

Diverter, flexible connections, connection fittings, thermostatic valves and heads



Draining and venting

Air vents, automatic venting, draining valves, inflow and outflow apparatus



www.hummel.com

HUMMEL AG
Lise-Meitner-Straße 2
79211 Denzlingen
Germany
www.hummel.com

Tel. +49 (0) 76 66 / 9 11 10-400
Fax +49 (0) 76 66 / 9 11 10-9420
E-Mail plh@hummel.com

