

DIVERTERS

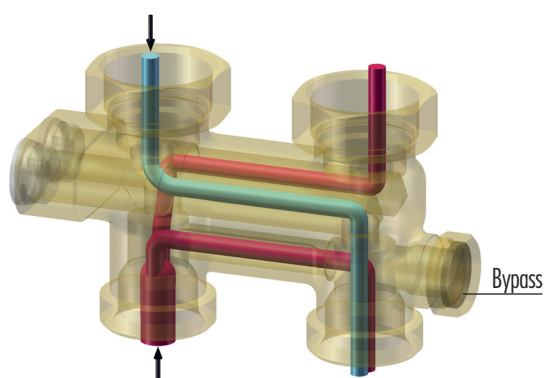


THE PROBLEM SOLVER FOR HEATING RENOVATION

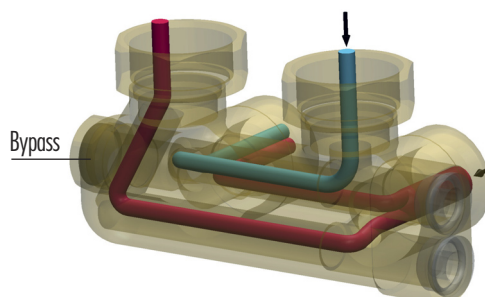
Problem solvers help save energy

Diverter valves are not only the ideal problem solvers for reversed flow and return, they also help to save energy. The integrated bypass adjustment in the single-pipe system allows the flow rate and hydraulics to be regulated. This is the prerequisite for hydraulic balancing for energy-efficient adjustment of the system. This reduces heating costs significantly.

Single pipe / double pipe straight



Single pipe / double pipe corner



Intelligence inside: The adjustable flow rate in the bypass enables hydraulic balancing and increases energy efficiency.

A video clip demonstrates how easy it is to install the deflectors. The possible areas of application and the individual installation steps are shown. There are also explanatory text inserts. This clearly illustrates the challenges that fitters often have to face on site. The short videos are available on the HUMMEL YouTube channel and on the HUMMEL website.

to the assembly
instruction



Heating renovation made easy

Diverter valves are the ideal problem solvers when refurbishing heating systems. When replacing radiators, tradesmen are always faced with the same problem: the flow and return pipes are swapped when converting to modern radiators. The solution is simple and easy to install. A diverter piece ensures crossover-free flow and can be installed without welding or thread cutting.

- // For interchanged flow and return pipes
- // Ensures crossover-free flow
- // For one and two pipe systems
- // Straight-through or corner form
- // Eurocone compatible
- // With lateral bypass spindle
- // Hydraulically adjustable



HUMMEL Diverters

MATERIAL DATA

- // Body/Union nut: nickel-plated brass
- // Moulded seal: EPDM/Teflon
- // Connection nipple: Brass blank
- // Cone insert: PA

TECHNICAL DATA

- // Operating temperature: up to 120 °C
- // Operating pressure: 10 bar

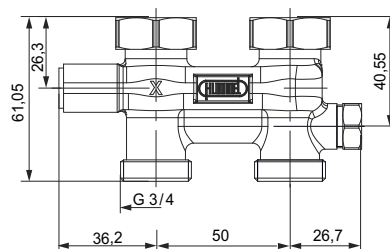


Pressure loss tables under www.hummel.com

Diverters lockable for one and two pipe systems, flat sealing version

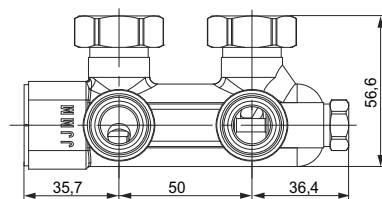
- // For interchanged flow and return pipes
- // With lateral bypass spindle
- // With lateral spindle shut-off
- // Union nut G 3/4
- // 50 mm center distance
- // Nickel-plated brass
- // Eurocone compatible

Straight type



Version	Item-No
with 2 cone inserts	2 257 0023 01
with 2 nipples G 1/2 x G 3/4	2 257 0024 01

Corner type



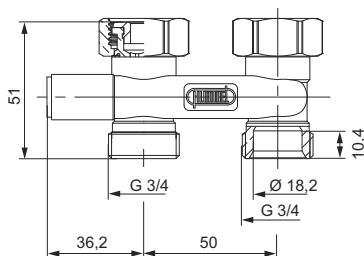
Version	Item-No
with 2 cone inserts	2 257 0026 01
with 2 nipples G 1/2 x G 3/4	2 257 0027 01

Diverters lockable, flat sealing version

- // For interchanged flow and return pipes
- // With lateral spindle shut-off
- // Union nut G 3/4
- // 50 mm center distance

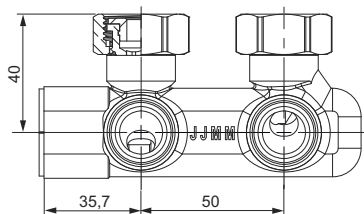
- // Nickel-plated brass
- // Eurocone compatible

Straight type



Version	Item-No
with 2 cone inserts	2 257 0004 01
with 2 nipples G 1/2 x G 3/4	2 257 0005 01

Corner type

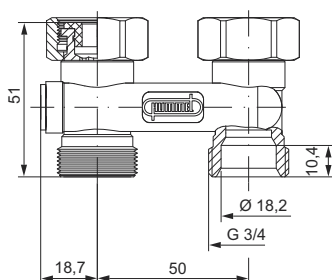


Version	Item-No
with 2 cone inserts	2 257 0010 01
with 2 nipples G 1/2 x G 3/4	2 257 0011 01

Diverters, straight type version, not lockable, flat sealing version

- // For interchanged flow and return pipes
- // Union nut G 3/4
- // 50 mm center distance

- // Nickel-plated brass
- // Eurocone compatible

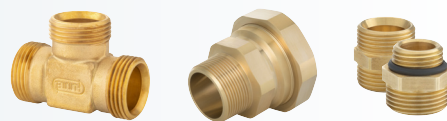


Version	Item-No
with 2 cone inserts	2 257 0002 01
with 2 nipples G 1/2 x G 3/4	2 257 0003 01

SOLUTIONS FOR HEATING AND DRINKING WATER SYSTEMS

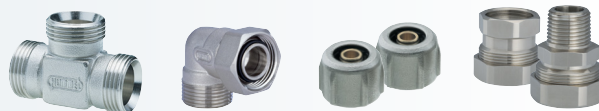
Solutions for drinking water systems

Steel pipe adapters, compression fittings, connection fittings, nipples



Connection fittings

Reductions, coupling angle, steel pipe adapters, compression fittings



Radiator connections

Diverter, flexible connections, connection fittings, thermostatic valves and heads



Draining and venting

Air vents, automatic venting, draining valves, inflow and outflow apparatus



www.hummel.com

HUMMEL AG
Lise-Meitner-Straße 2
79211 Denzlingen
Germany
www.hummel.com

Tel. +49 (0) 76 66 / 9 11 10-400
Fax +49 (0) 76 66 / 9 11 10-9420
E-Mail plh@hummel.com

