

## STEEL PIPE ADAPTERS

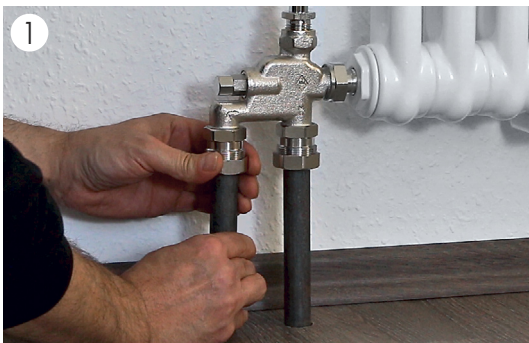


PROBLEM SOLVERS FOR  
HEATING AND DRINKING WATER SYSTEMS

# Problem solver for renovation

Impressive technical data and easy installation - this makes the steel pipe adapter one of the most important problem solvers for installers. They can rely on safe and quick installation even in difficult working environments.

**Simple, quick and clean:** this is how radiator installation works!



## Attach

- // Cut the dirt-free steel pipe straight to length and deburr.
- Insert the steel pipe adapter over the steel pipe as far as it will go.

- // No special pre-treatment required
- // For hub or axial connections



## Tightening

- // Hand-tighten the steel pipe adapter. Tighten in this position with an open-end spanner or fitting pliers approx.  $\frac{3}{4}$  – 1 turn.

- // No welding necessary
- // High retention and pull-out forces
- // Dirt-free installation, ideal for working in living spaces



## Done

- // No soiling of occupied rooms
- // Visually matches the connection fitting
- // A clean affair!

### Steel pipe adapter case, art. no. 2 810 0320 20

The HUMMEL steel pipe adapter is available in eleven sizes and variants. It is compatible with connection fittings with Euro cone and internal or external thread. The steel pipe adapter case is the ideal helper for the fitter on site. He has all variants at hand and is therefore well equipped for any installation situation.



## Steel pipe adapter for heating and drinking water

The HUMMEL steel pipe adapter is the ideal problem solver for the renovation of heating and drinking water systems. The installation of new radiators to existing connections is easy and leaves no traces on wall and floor coverings - simply a clean job! Welding and thread cutting are a thing of the past. Especially in occupied

- // Fast assembly
- // High retention forces
- // High temperature resistance
- // High pressure resistance
- // Fits all standard steel pipes
- // Flush-mounted use according to 18380

### Steel pipe adapter for heating systems



#### Suitable pipe-diameters (DIN EN 10255M)

Ø Pipe	outside diam.	max.	min.	insertion depth
3/8	17,2 mm	17,5 mm	16,7 mm	20 mm
1/2	21,3 mm	21,8 mm	21,0 mm	23 mm
3/4	26,9 mm	27,3 mm	26,5 mm	26 mm
1	33,7 mm	34,2 mm	33,3 mm	30 mm
1 ¼	42,4 mm	42,9 mm	42,0 mm	37 mm
1 ½	48,3 mm	48,8 mm	47,9 mm	48 mm

#### TECHNICAL DATA

Max. operating temperature (heating)	up to 120 °C
Max. operating pressure:	10 bar

#### MATERIAL DATA

Body (heating):	Nickel-plated brass
Thrust ring:	Brass blank
Moulded seal	EPDM
Retaining claw:	Stainless steel

### Steel pipe adapter for drinking water systems



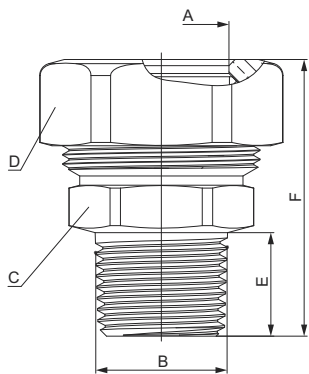
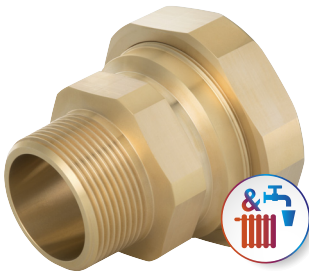
#### TECHNICAL DATA

Max. operating temperature (drinking water):	bis 95 °C
Max. operating temperature (heating):	bis 120 °C
Max. operating pressure:	10 bar
DVGW Reg.-Nr.:	DW-8511CU0182

#### MATERIAL DATA

Body (drinking water):	Brass blank
Thrust ring:	Brass blank
Moulded seal:	EPDM
Retaining claw:	Stainless steel

## Drinking water steel pipe adapter with external thread



- // For drinking water and heating systems
- // DVGW certificate for steel pipe adapters made of brass in connection with steel pipes for the cold water sector
- // For connection fittings with internal thread
- // For steel pipes (DIN EN 10255 M/H, DIN EN 10220-1, DIN EN 10240)
- // Flush-mounted use according to 18380
- // Extremely high holding forces



Version						
A	B	C	D	E	F	Item-No
Pipe 1/2	R 1/2	SW 27	SW 36	16,8	45	2 755 1212 00
Pipe 3/4	R 3/4	SW 34	SW 45	19	50	2 755 3434 00
Pipe 1	R 1	SW 41	SW 55	22	56	2 755 1010 00
Pipe 1 1/4	R 1 1/4	SW 50	SW 65	25	69	2 755 5454 00
Pipe 1 1/2	R 1 1/2	SW 60	SW 80	25	80	2 755 6464 00

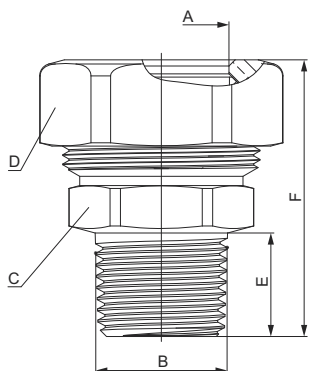
### TECHNICAL DATA

Max. operating temperature (drinking water):	up to 95 °C
Max. operating temperature (heating):	up to 120 °C
Max. operating pressure:	10 bar
DVGW Reg.-Nr.:	DW-8511CU0182

### MATERIAL DATA

Body:	Brass blank
Thrust ring:	Brass blank
Material moulded seal:	EPDM
Retaining claw:	Stainless steel

## Steel pipe adapter with external thread



- // For connection fittings with internal thread
- // Fast, simple and safe installation
- // Extremely high holding forces
- // High pressure and temperature resistance
- // For steel pipes (DIN EN 10255 M/H, DIN EN 10220-1)
- // For boiling pipes (DIN EN 10216-1, DIN EN 10217-1)
- // Flush-mounted use according to 18380

Version						
A	B	C	D	E	F	Item-No
Pipe 3/8	R 3/8	SW 24	SW 30	13,2	39	2 355 3838 01
Pipe 3/8	R 1/2	SW 24	SW 30	16,8	42	2 355 3812 01
Pipe 1/2	R 1/2	SW 27	SW 36	16,8	45	2 355 1212 01
Pipe 3/4	R 3/4	SW 34	SW 45	19	50	2 355 3434 01
Pipe 1	R 1	SW 41	SW 55	22	56	2 355 1010 01
Pipe 1 1/4	R 1 1/4	SW 50	SW 65	25	69	2 355 5454 01
Pipe 1 1/2	R 1 1/2	SW 60	SW 80	25	80	2 355 6464 01

### TECHNICAL DATA

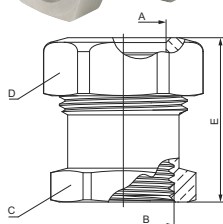
Max. operating temperature:	up to 120 °C
Max. operating pressure:	10 bar

### MATERIAL DATA

Body:	Nickel-plated brass
Thrust ring:	Brass blank
Material moulded seal:	EPDM
Retaining claw:	Stainless steel

# HUMMEL STEEL PIPE ADAPTERS

## Steel pipe adapter with internal thread



- // For connection fittings with external thread
- // Fast, simple and safe installation
- // Extremely high holding forces
- // High pressure and temperature resistance
- // For steel pipes (DIN EN 10255 M/H, DIN EN 10220-1)
- // For boiling pipes (DIN EN 10216-1, DIN EN 10217-1)
- // Flush-mounted use according to 18380

Version	A	B	C	D	E	Item-No
Pipe 3/8	G 1/2	SW 27	SW 30	34		2 356 3812 01
Pipe 1/2	G 1/2	SW 27	SW 36	36		2 356 1212 01

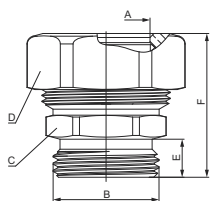
### TECHNICAL DATA

Max. operating temperature:	up to 120 °C
Max. operating pressure:	10 bar

### MATERIAL DATA

Body:	Nickel-plated brass
Thrust ring:	Brass blank
Material moulded seal:	EPDM
Retaining claw:	Stainless steel

## Steel pipe adapter with Eurocone external thread



- // For connection fittings with Euro Cone (DIN EN 16313)
- // Fast, simple and safe installation
- // Extremely high holding forces
- // High pressure and temperature resistance
- // For steel pipes (DIN EN 10255 M/H, DIN EN 10220-1)
- // For boiling pipes (DIN EN 10216-1, DIN EN 10217-1)
- // Flush-mounted use according to 18380

Version	A	B	C	D	E	F	Item-No
Pipe 3/8	G 3/4	SW 27	SW 30	9,5	34		2 354 3834 01
Pipe 1/2	G 3/4	SW 27	SW 36	9,5	36		2 354 1234 01
Pipe 3/4	G 3/4	SW 34	SW 45	9,5	41		2 354 3434 01

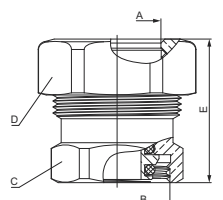
### TECHNICAL DATA

Max. operating temperature:	up to 120 °C
Max. operating pressure:	10 bar

### MATERIAL DATA

Body:	Nickel-plated brass
Thrust ring:	Brass blank
Material moulded seal:	EPDM
Retaining claw:	Stainless steel

## Steel pipe adapter with Eurocone internal thread



- // For connection fittings with Euro Cone (DIN EN 16313)
- // Fast, simple and safe installation
- // Extremely high holding forces
- // High pressure and temperature resistance
- // For steel pipes (DIN EN 10255 M/H, DIN EN 10220-1)
- // For boiling pipes (DIN EN 10216-1, DIN EN 10217-1)
- // Flush-mounted use according to 18380

Version	A	B	C	D	E	Item-No
Pipe 3/8	G 3/4	SW 30	SW 30	34		2 353 3834 01
Pipe 1/2	G 3/4	SW 30	SW 36	36		2 353 1234 01

### TECHNICAL DATA

Max. operating temperature:	up to 120 °C
Max. operating pressure:	10 bar

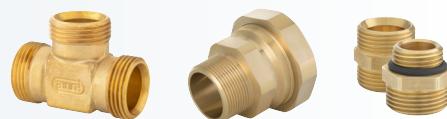
### MATERIAL DATA

Body:	Nickel-plated brass
Thrust ring:	Brass blank
Material moulded seal:	EPDM
Retaining claw:	Stainless steel

# SOLUTIONS FOR HEATING AND DRINKING WATER SYSTEMS

## Solutions for drinking water systems

Steel pipe adapters, compression fittings, connection fittings, nipples



## Connection fittings

Reductions, coupling angle, steel pipe adapters, compression fittings



## Radiator connections

Diverter, flexible connections, connection fittings, thermostatic valves and heads



## Draining and venting

Air vents, automatic venting, draining valves, inflow and outflow apparatus



[www.hummel.com](http://www.hummel.com)

HUMMEL AG  
Lise-Meitner-Straße 2  
79211 Denzlingen  
Germany  
[www.hummel.com](http://www.hummel.com)

Tel. +49 (0) 76 66 / 9 11 10-400  
Fax +49 (0) 76 66 / 9 11 10-94 20  
E-Mail [plh@hummel.com](mailto:plh@hummel.com)

