

ONE SOLUTION  
FOR 2 SYSTEMS



## SOLUTIONS FOR DRINKING WATER SYSTEMS



STEEL PIPE ADAPTERS // COMPRESSON FITTINGS // CONNECTORS

# The right solution for every pipe

Good news for all modernisers and renovators: HUMMEL offers compression fittings for all common pipe types on the market. Gone are the days when tradesmen had to search for suitable connection solutions.

28 renovation sets offer solutions for more than 70 different plastic and metal composite pipes. These are almost all pipe types on the market. These sets are especially aimed at the needs in renovation. The old pipes can be pre-treated with a special calibration tool. This creates the conditions for a perfect and safe connection solution. One set consists of 10 fittings and one calibration tool.

**HUMMEL compression fittings make renovation easier:**

- // For heating and drinking water systems
- // Simple, dirt-free installation without special tools
- // Space-saving installation especially for difficult environments
- // Suitable solutions also for special sizes



**NEW!**  
28 MKV-K-Sets  
for  
renovation



UBA compliant



# Problem Solvers for Heating and Drinking Water

HUMMEL offers a whole range of problem solvers for drinking water systems. These include steel pipe adapters, compression fittings and connection parts. They are all manufactured from UBA-compliant materials. This means that these problem solvers fulfil all hygiene requirements for use in drinking water systems.

One solution for two systems! HUMMEL follows this principle. This is why HUMMEL problem solvers can be used in both drinking water and heating systems. This has decisive advantages for tradesmen: There is no danger of any mix-ups on the building site. The compression fittings, steel pipe adapters and connection parts can be used in both systems without any problems. This makes procurement and stock-keeping simple and uncomplicated.

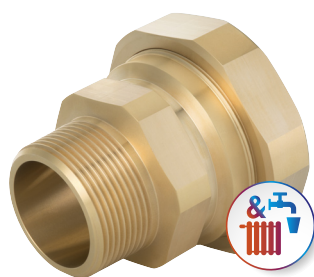
// Steel pipe adapters // Compression Fittings // Connectors

- UBA compliant<sup>1</sup>
- For drinking water and heating
- No likelihood of mix-ups
- Simple assembly without special tools
- High holding forces

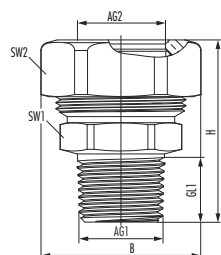


<sup>1</sup> These products fulfil the hygienic requirements for materials in accordance with the German Federal Environment Agency's Drinking Water Ordinance (UBA)

## Steel pipe adapter for drinking water systems with external thread



- // DVGW certificate for steel pipe adapters made of brass in connection with steel pipes for cold water
- // For connection fittings with internal thread
- // For steel pipes (DIN EN 10255 M/H, DIN EN 10220-1, DIN EN 10240)
- // Flush-mounted usage according to DIN 18380
- // Extremely high holding forces



AG1	AG2	SW1	SW2	GL1	H	Item No.
Pipe 1/2	R 1/2	SW 27	SW 36	16,8	45	2 755 1212 00
Pipe 3/4	R 3/4	SW 34	SW 45	19	50	2 755 3434 00
Pipe 1	R 1	SW 41	SW 55	22	56	2 755 1010 00
Pipe 1 1/4	R 1 1/4	SW 50	SW 65	25	69	2 755 5454 00
Pipe 1 1/2	R 1 1/2	SW 60	SW 80	25	80	2 755 6464 00

### Technical data

Max. operating temperature (drinking water):	up to 95 °C
Max. operating temperature (heating):	up to 120 °C
Max. operating pressure:	10 bar
DVGW Reg.-Nr.:	DW-8511CU0182

### Material data

Body:	Brass blank
Thrust ring:	Brass blank
Material moulded seal:	EPDM
Retaining claw:	Stainless steel

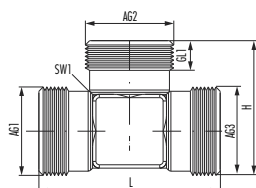
## Coupling T-piece



- // For heating and drinking water
- // For compression fittings
- // Connection type (AT): Euro cone



UBA compliant



AG1	AG2	AG3	L	H	Item No.
G 3/4	G 3/4	G 3/4	54	40	2 253 3495 00

### Technical data

Operating temperature (drinking water):	up to 95 °C
Operating temperature (heating):	up to 120 °C
Operating pressure:	10 bar

### Material data

Body:	Brass blank
-------	-------------



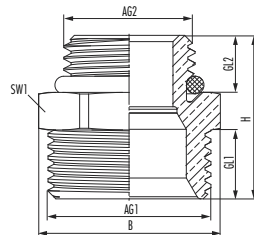
## Connection nipple



UBA compliant



- // For heating and drinking water
- // For compression fittings
- // O-ring sealing
- // Connection type 1 (AT1): Euro cone
- // Connection type 2 (AT2): External Thread



Version			Item No.
AG1	AG2	H	
G 3/4	G 1/2	26	2 554 1234 00

### Technical data

Operating temperature (drinking water):	up to 95 °C
Operating temperature (heating):	up to 120 °C
Operating pressure:	10 bar

### Material data

Body:	Brass blank
Moulded seal:	EPDM

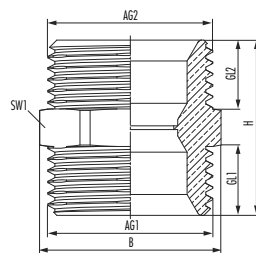
## Coupling nipple, conical sealing



UBA compliant



- // For heating and drinking water
- // For compression fittings
- // Connection type (AT1 + AT2): Euro cone



Version			Item No.
AG1	AG2	H	
G 3/4	G 3/4	28	2 253 3434 00

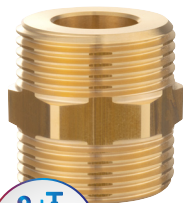
### Technical data

Operating temperature (drinking water):	up to 95 °C
Operating temperature (heating):	up to 120 °C
Operating pressure:	10 bar

### Material data

Body:	Brass blank
-------	-------------

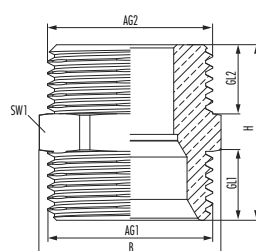
## Connection nipple, flat sealing



UBA compliant



- // For heating and drinking water
- // For compression fittings
- // Connection type 1 (AT1): Euro cone
- // Connection type 2 (AT2): flat-sealing



Version			Item No.
AG1	AG2	H	
G 3/4	G 3/4	28	2 554 3434 00

### Technical data

Operating temperature (drinking water):	up to 95 °C
Operating temperature (heating):	up to 120 °C
Operating pressure:	10 bar

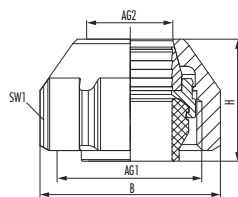
### Material data

Body:	Brass blank
-------	-------------

## Compression fitting SpeedFIX 15



- // For heating and drinking water
- // For copper-, precision steel and stainless steel pipes with a wall thickness  $\geq 1$  mm
- // Connection type (AT1): Euro cone
- // Low tightening torque



Version	AG1	AG2	SW1	H	B	Item No.
G 3/4	15 mm	30	20,5	33,2	2 855 0015 01	
G 3/4 chrome	15 mm	30	20,5	33,2	2 855 0015 02	
G 3/4 white	15 mm	30	20,5	33,2	2 855 0015 90	

### Technical data

Operating temperature (drinking water): up to 95 °C

Operating temperature (heating): up to 120 °C

Operating pressure: 10 bar

### Material data

Union nut: Nickel-plated brass

Clamp ring: Brass blank

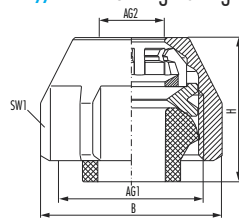
Moulded seal: EPDM



## Compression fitting MKV-M



- // For copper-, precision steel and stainless steel pipes with a wall thickness  $\geq 1$  mm
- // EPDM sealing element
- // Nickel plated brass
- // Euro cone compatible
- // Minimum tightening torque of 40 Nm



Version	Clamping range	Item No.
G 3/4	10 – 12 mm	2 855 0001 01
G 3/4	13 – 15 mm	2 855 0002 01
G 3/4	16 – 18 mm	2 855 0003 01

### Technical data & Material data

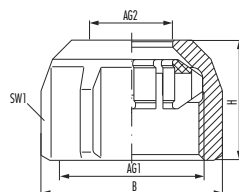
Identical to SpeedFIX compression fitting



## Compression fitting MKV-K



- // For heating and drinking water
- // For plastic and multilayer metal pipes
- // With integrated, patented plastic clamp insert
- // With support sleeves
- // Connection type (AT1): Euro cone
- // Minimum tightening torque of 40 Nm



Version	AG1	AG2	SW1	H	B	Item No.
G 3/4	12 x 2 mm	30	24,5	33,2	2 862 1202 01	
G 3/4	14 x 2 mm	30	24,5	33,2	2 862 1402 01	
G 3/4	16 x 1,8 mm	30	25	33,2	2 862 1618 01	
G 3/4	16 x 2 mm	30	25	33,2	2 862 1602 01	
G 3/4	16 x 2,25 mm	30	25	33,2	2 862 1622 01	
G 3/4	17 x 2 mm	30	25	33,2	2 862 1702 01	
G 3/4	17 x 2,5 mm	30	25	33,2	2 862 1725 01	
G 3/4	18 x 2 mm	30	25	33,2	2 862 1802 01	
G 3/4	20 x 2 mm	30	25	33,2	2 862 2002 01	
G 3/4	20 x 2,5 mm	30	25	33,2	2 862 2025 01	
G 3/4	20 x 2,9 mm	30	25	33,2	2 862 2029 01	

### Technical data & Material data

Identical to SpeedFIX compression fitting



**NEW!**  
**28 MKV-K-Sets**  
 for  
 renovation

## CONNECTORS FOR HEATING AND DRINKING WATER SYSTEMS

### Compression fittings MKV-K sets including calibration tool

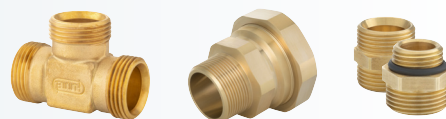


Set-No	AG1	AG2	Item No.
1	G 3/4	9,9x1,1 mm / 10x1,3 mm / 10,1x1,1 mm / 12x2,25 mm	2862 0001 01
2	G 3/4	11,6x1,8 mm / 12x1,8 mm / 12x2 mm / 13x2,5 mm	2862 0002 01
3	G 3/4	11,6x1,5 mm / 12x1,6 mm / 12x1,7 mm	2862 0003 01
4	G 3/4	14x2,6 mm	2862 0004 01
5	G 3/4	12x1,4 mm / 12x1,5 mm	2862 0005 01
6	G 3/4	14x2,5 mm	2862 0006 01
7	G 3/4	12x1,1 mm / 12x1,2 mm / 12x1,25 mm / 12x1,3 mm	2862 0007 01
8	G 3/4	14x2,25 mm	2862 0008 01
9	G 3/4	15x2,6 mm / 16x3,3 mm	2862 0009 01
10	G 3/4	12x1 mm	2862 0010 01
11	G 3/4	13x1,5 mm / 14x2 mm	2862 0011 01
12	G 3/4	15x2,5 mm	2862 0012 01
13	G 3/4	14x1,6 mm / 14x1,75 mm	2862 0013 01
14	G 3/4	16x2,7 mm / 16x2,75 mm	2862 0014 01
15	G 3/4	14x1,5 mm	2862 0015 01
16	G 3/4	15x2,0 mm / 16,2x2,6 mm	2862 0016 01
17	G 3/4	15x1,8 mm / 15,5x2 mm / 16x2,2 mm / 16x2,25 mm / 17x2,75 mm / 17x2,8 mm	2862 0017 01
18	G 3/4	14x1 mm	2862 0018 01
19	G 3/4	15x1,5 mm / 15,6x1,8 mm / 16x2 mm / 16,2x2,1 mm / 16,7x2,4 mm / 17x2,5 mm	2862 0019 01
20	G 3/4	15x1,2 mm / 16x1,75 mm / 16x1,8 mm / 17x2,2 mm	2862 0020 01
21	G 3/4	18x2,75 mm	2862 0021 01
22	G 3/4	15x1 mm / 16x1,5 mm / 17x2 mm	2862 0022 01
23	G 3/4	18x2,5 mm	2862 0023 01
24	G 3/4	18x2 mm / 20x2,9 mm	2862 0024 01
25	G 3/4	18x1,75 mm / 20x2,8 mm	2862 0025 01
26	G 3/4	18x1,5 mm / 19x2 mm / 20x2,5 mm / 20,2x2,6 mm	2862 0026 01
27	G 3/4	18x1,25 mm / 20x2,25 mm / 20x2,3 mm	2862 0027 01
28	G 3/4	18x1 mm / 18x1,2 mm / 20x2 mm	2862 0028 01

# SOLUTIONS FOR HEATING AND DRINKING WATER SYSTEMS

## Solutions for drinking water systems

Steel pipe adapters, compression fittings, connection fittings, nipples



## Connection fittings

Reductions, coupling angle, steel pipe adapters, compression fittings



## Radiator connections

Diverter, flexible connections, connection fittings, thermostatic valves and heads



## Draining and venting

Air vents, automatic venting, draining valves, inflow and outflow apparatus



[www.hummel.com](http://www.hummel.com)

**HUMMEL AG**  
Lise-Meitner-Straße 2  
79211 Denzlingen  
Germany  
[www.hummel.com](http://www.hummel.com)

Tel. +49 (0) 76 66 / 9 11 10 - 400  
Fax +49 (0) 76 66 / 9 11 10 - 94 20  
E-Mail [plh@hummel.com](mailto:plh@hummel.com)

